



TORO Count on it.

Sand Pro® 3040 & 5040



TORO. Count on it.

QAS changes everything.

Sand Pro® 3040 & 5040

- Patent-pending Quick Attach System™ (QAS)
- 17 available attachments
- Series/Parallel™ 3WD
- Hydraulic power steering (5040)
- Front (5040), mid and rear attachment points
- Steerable front attachments

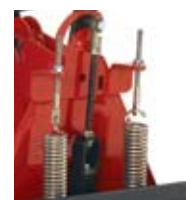
It's time to demand more from a bunker rake. With the patent-pending Quick Attach System (QAS) and 17 attachments, the new Sand Pro 3040 and 5040 are versatile utility vehicles with as many uses outside the bunker as in it. QAS lets you change most attachments in under a minute and gives you more options out on the course. The Toro® Sand Pro keeps your bunkers in tournament condition every day.



Count on Innovation

Perfect under pressure.

Precisely calibrated tension springs and the Toro True Float contour following system produce the uncommonly smooth performance of the new Flex Blade. They enable the blade to self adjust, maintaining consistent pressure over the contour of the bunker thereby reducing operator influence and damage.





Switch blade.

17 attachments are designed to make you more productive and keep your bunkers in pristine condition. Leading the way is an innovative Flex Blade for the Sand Pro 5040. It raises and lowers hydraulically while tension springs maintain consistent pressure over the slope of the bunker. It is the first blade offering a steerable design making it ideal for pushing, packing, shaping and smoothing bunkers. The flexible design also prevents tip damage and gouging on the lip or walls of the bunker. A spring-balanced manual blade is also available. With hydraulic power steering, you have a compact utility vehicle that works hard with effortless maneuverability.

We spell productivity Q-A-S.

The need for a more versatile bunker rake led to the development of the Toro® Quick Attach System™ (QAS). QAS makes changing accessories a quick, easy task that any member of your maintenance crew can master in seconds. Repair a bunker, groom wet or dry sand, blow debris or reconstruct a tee all with the same machine. Both Sand Pro models offer a rear hydraulic QAS and mid-mount scarifier while the Sand Pro 5040 offers an optional front hydraulic QAS. The ability to carry three attachments ensures that you have the right tool for the right job at the right time.

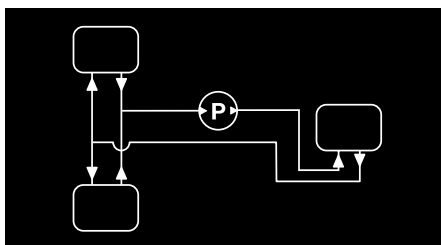


The tools you need when you need them.

Rear grooming attachments offer the flexibility to handle a variety of sand and weather conditions. The rear broom comes in three sections with two hinge points that allow the bristles to follow the contours of intricate bunkers and is ideal for contour shaping and grooming without the fluffing created by traditional rake attachments. Drag mats come in steel and coco designs. The coco drag mat works well for brushing in topdressing on greens. Smooth tyres are available for use on greens. A mid-mount attachment on the Sand Pro 5040 allows you to scarify and groom in a single pass. Mid-mount attachments can rotate up and out of the way when entering and exiting bunkers to protect the bunker lip.



Change from a spring rake to a drag mat in seconds—without any tools.



3-wheel Series/Parallel drive provides excellent traction going in and out of bunkers, even when pushing up sand after washouts.



Accessories

Also Available: Flex blade, Finish grader, Spiker, Steel drag mat, 60" manual blade, Utility box, Storage box, Spring tine teeth, Solid tine scarifier teeth and leveling blade, Carbide tipped solid tine scarifier teeth, Weeding tine teeth

Segmented grooming broom



Tooth rake



Spring rake



Drag mat carrier system Coco mat



Cyclone™ 1000 blower



Spring balanced manual blade



Specifications for Sand Pro® 3040 & 5040

Engine

Model: Vanguard® V-Twin cylinder, 4-cycle, OHV

Rating: 3040: 11.9 kW (16 hp), @ 3600 rpm
5040: 13.4 kW (18 hp) @ 3600 rpm

Displacement: 3040: 480 cc (29.3 cu. in.); 5040: 570 cc (34.8 cu. in.)

Oil capacity: 1.8 litre (1.75 quart)

Fuel/capacity: Petrol/ 18.9 litre (5 gallon)

Cooling: Air (high flow blower)

Air cleaner system: Remote mounted 3-phase Donaldson® air cleaner

Traction Unit

Drive: Direct driven hydrostatic variable speed displacement piston pump to 3 hydraulic motors for 3WD, patented Series/Parallel™ hydraulic traction system

Brakes: Dynamic braking through the hydrostatic transmission, hand actuated brake lever

Steering: 38 cm (15") diameter steering wheel, zero turning radius.

3040: Gear drive manual steering 5040: Hydraulic power steering

Gauges: Hour meter

Tyres: Three 22 x 11.00-8 pneumatic tubeless tyres

Hydraulic oil: 18.9 litre (5.0 gallon). 35 micron replaceable cartridge

Main frame: Welded rectangular tubular steel frame construction

Seat: High-back cushion seat w/drain hole, 10.2 cm (4") front-back adjustment w/additional 4.5 cm (1.75") mounting adjustment, arm rests optional

Controls: Hand operated choke, throttle, and hydraulic control for raising/lowering with float,

3040: Rear hydraulic lift and lower controls,

5040: Front (optional) and rear hydraulic lift and lower controls

Ground Speed

Infinitely variable 16 km/h (0-10 mph) for.; 6.9 km/h (4.3 mph) rev.

Electrical

Battery: 12 volt, 15 amp., 300 CCA @ 0°F

Starter: 12 volt electric

Sound Level (operator)

87 dB(A)

Dimensions

Width: 147 cm (58"); **Length:** 171.5 cm (67.5")

Height: 114.9 cm (45.25"); **Wheelbase:** 108 cm (42.75")

Weight: Net weight (less fluids): 421.8 kg (930 lbs.)

Ground clearance: 15.2 cm (6.0")

Attachments & Accessories (Optional)

QAS Mount

Hydraulic Flex Blade (5040 only): Front QAS, 91.4 cm (36") width steel blade, 4 position settings – raise, hold, lower, and float; transport height: 21.5 cm (8.5")

Grooming broom: Rear QAS, 3 brooms, 184.9 cm (72.6") wide

Tooth rake: Rear QAS, 183 cm (72") width, with 5 rake sections, 27 prongs adjustable for depth and wear

Spring rake: Rear QAS, 193 cm (76") width, with 5 rake sections and spring teeth for excellent floatation and minimal surface disruption

Drag mat carrier system: Rear QAS, 183 cm (72") width, steel or coco drag mats, 61 cm (2") working surface, hydraulic raise/lower

Cyclone 1000 blower: Rear QAS, quick connect, hydraulic power, 2000 rpm fan speed (2700 cfm @ 81 mph)

Finish grader: Rear QAS, 168 cm (66") width, box plow and scarifier, 4.5 cm (1.8") max working depth, spring loaded to allow relief if an obstruction is hit; hardened carbide tips available for scarifier teeth

Spiker: Rear QAS, 146 cm (57.6") width, 3.1 cm (1.25") max working depth, 6.1 cm (2.4") blade spacing; two independently floating units, with 12 spiker blades and 11 hold down fingers

Mid-Mount

Scarifier/leveling blade: Selectable depth from 0-3.8 cm (0-1.5"), 132.1 cm (52") wide, transport height: 17.1 cm (6.75")

Additional

Manual blade: 101 cm (40") width steel blade, transport height: 27.9 cm (11"), spring assisted for raising plow, optional 152.4 cm (60") blade kit available

Turf tyre: 22 x 11.00-8

Hitch kit: 90.7 kg (200 lbs) gross trailer weight/hitch load

See product specifications manual for additional attachments.

Warranty: Two year limited

TORO® PROFESSIONAL SERVICES

Toro Financing Many flexible financing options are available to meet your specific operational requirements.

Toro Genuine Parts Keep the productivity and performance of your equipment at its peak by using genuine Toro replacement parts. Find and identify your replacement parts online at www.Toro.com/partsviewer.

Toro Training Toro Technical Service Schools are available from your local distributor. Explore the training and customer care areas of Toro.com and ToroNSN.com for readily available on-line education and training materials.

Toro Controller Repair Provides irrigation controller boards ready for immediate board exchange to assure that downtime is minimal and your turf stays protected. Toro is the choice for reliability.
+1 909 785 3630

Toro NSN® An industry-first support network that provides reliable, around-the-clock irrigation central control system trouble-shooting and operation assistance. For assistance please contact:
Canada / Mexico / Latin America +1 325 673 8762
Europe / Middle East / Africa +32 (0) 14 56 29 33
Australia / Asia-Pacific +61 7 3268 2154

Products depicted in this brochure are for demonstration purposes only. Actual products offered for sale may vary.

©2006 The Toro Company, 8111 Lyndale Ave. S.,
Bloomington, MN 55420-1196

GB Part No. 200-3170. Printed in U.S.A.

www.toro.com



Count on it.