

TORO**Count on it.**

BlueLine[®] Classic Premium Dripline

Micro-Irrigation



Application:

The BlueLine Classic dripline features an innovative emitter design that provides superior field performance in the most extreme conditions. Coupled with Toro's Blue Stripe[®] hose, the industry standard against which all other hose is measured, BlueLine Classic provides performance, durability and economy. For the best in both emitter and hose technology in permanent crop applications, Toro BlueLine Classic is the best choice.

Features and Benefits:

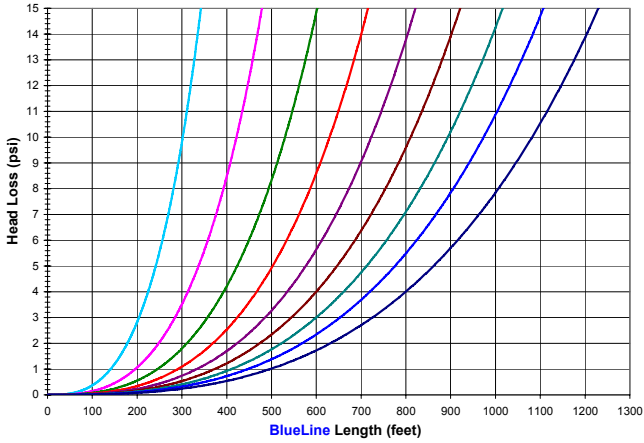
- **Efficient Emitter Design** - The unique "shark tooth" emitter flow path design allows uniform application of water and nutrients in demanding field applications, including long lengths of run or undulating terrain.
- **Accurate Flow Rate Between 5 and 60 psi** - A wide operating window means less waste and uniform application of fluids to all plants, even at system start up and shutdown.
- **Low Profile Emitter Design** - Reduced friction loss saves energy and helps ensure uniform application of fluid to all plants.
- **Uniform Manufacturing Platform** - State of the art injection molding technology yields an "industry best" manufacturing coefficient of variation (Cv) of less than 3%, helping to ensure uniform application of fluids to all plants.
- **Clogging Resistance** - Raised emitter inlets dramatically reduce the amount of debris allowed to enter the emitter flowpath during operation.
- **The Blue Stripe of Quality** - The Blue Stripe marker aids in emitter location during installation and operation.
- **BlueLine[®] Clipperline[®] Option** - Factory installed clips reduce labor costs and installation time, and allow control of water droplet placement.



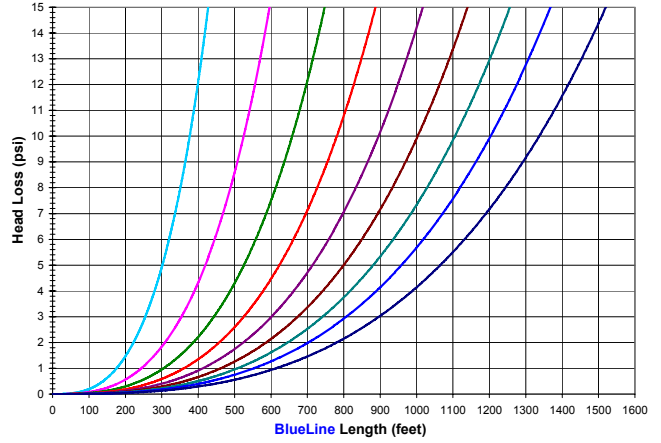
0.53 GPH BlueLine® Classic Dripline

Spacings: 12" 18" 24" 30" 36" 42" 48" 54" 60"

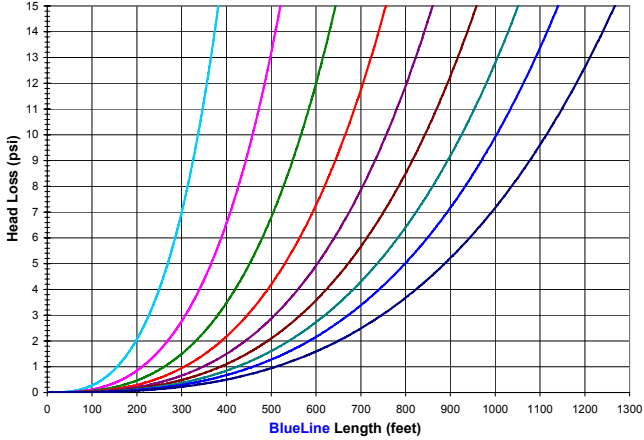
Head Loss v. Dripline Length and Emitter Spacing
BlueLine Classic 16mm (.550" ID) .53 GPH (2.0 LPH) Emitter 0% Slope.



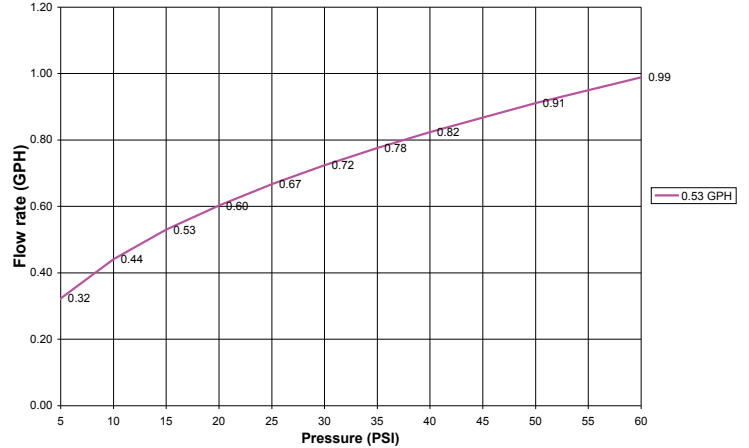
Head Loss v. Dripline Length and Emitter Spacing
BlueLine Classic 18mm (.620" ID) .53 GPH (2.0 LPH) Emitter 0% Slope.



Head Loss v. Dripline Length and Emitter Spacing
BlueLine Classic 20mm (.710" ID) 1.06 GPH (2.0 LPH) Emitter 0% Slope.



BlueLine Emitter Discharge vs. Pressure



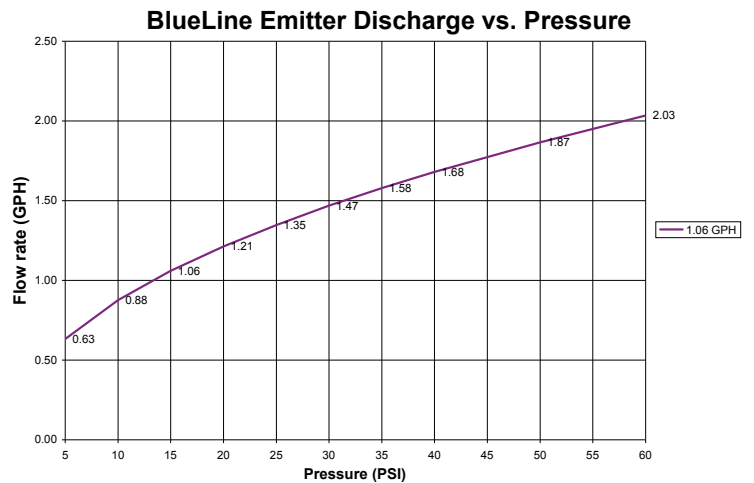
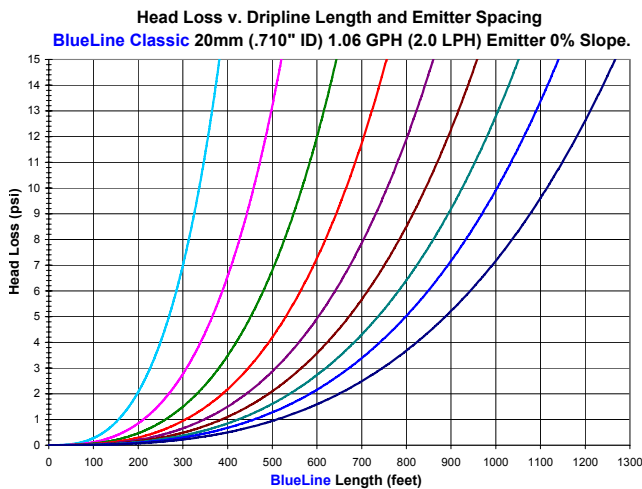
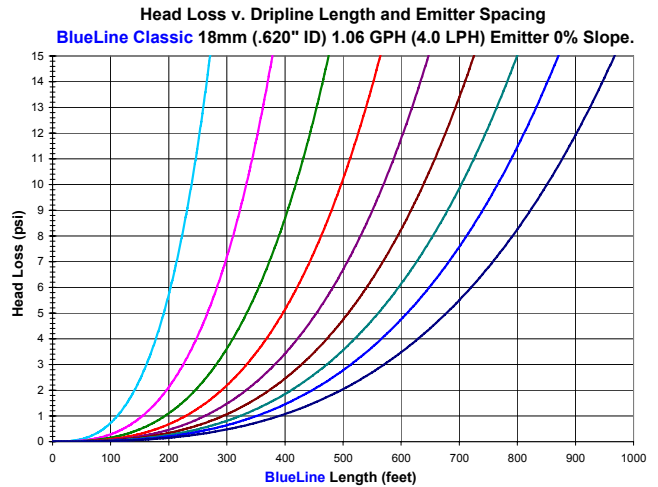
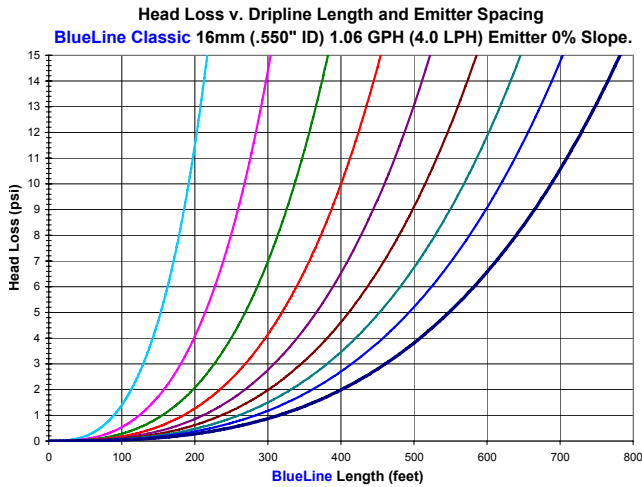
Specifications:

Hose Nominal ID:	16mm (0.550")	18mm (0.620")	20mm (0.710")
Hose Nominal Wall:	0.045"	0.045"	0.047"
Nominal Flow Rate (Q): @ 15 psi (1 bar)	0.53 gph (2 L/h)		
Operating Pressure Range (P):	5 to 60 psi (0.7 to 4.1 Bar)		
Emitter Exponent (x):	0.45		
Emitter Coefficient (K):	0.1567		
Coefficient of Variation (Cv):	<3%		
Barb Loss Factor (Kd):	0.8	0.64	0.27
Minimum Filtration:	120 Mesh (120 Micron)		



1.06 GPH BlueLine® Classic Dripline

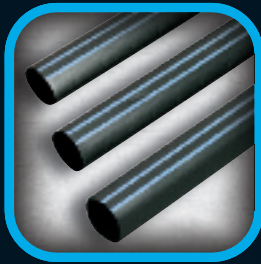
Spacings: 12" 18" 24" 30" 36" 42" 48" 54" 60"



Specifications:

Hose Nominal ID:	16mm (.550")	18mm (.620")	20mm (.710")
Hose Nominal Wall:	0.045"	0.045"	0.047"
Nominal Flow Rate (Q): @ 15 psi (1 bar)	1.06 gph (4 L/h)		
Operating Pressure Range (P):	5 to 60 psi (0.7 to 4.1 Bar)		
Emitter Exponent (x):	0.47		
Emitter Coefficient (K):	0.2969		
Coefficient of Variation (Cv):	<3%		
Barb Loss Factor (Kd):	0.8	0.64	0.27
Minimum Filtration:	120 Mesh (125 Micron)		





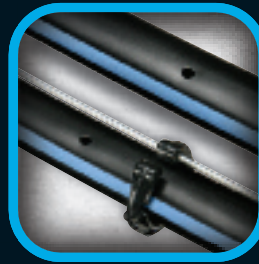
Aqua-Traxx®
with the **PBX Advantage**



NGE®



Aqua-Clear
Fiberglass Sand Filters



BlueLine™



Pro-Loc™ Fittings

The Blue Stripe of Quality.

TORO®

Count on it.

©2011 Toro Micro-Irrigation, 1588 N. Marshall Avenue, El Cajon, CA 92020 (800) 333-8125

©2014 The Toro Company
Micro-Irrigation Business
1588 N. Marshall Avenue, El Cajon, CA 92020-1523, USA
Tel: +1 (800) 333-8125 or +1 (619) 562-2950
Fax: +1 (800) 892-1822 or +1 (619) 258-9973

toro.com

ALT107 06/14

TORO®

Count on it.