

TORO

Count on it.

Micro-Irrigation



Aqua-Traxx[®] PC

Pressure Compensating Tape

An all-terrain, high performance drip tape.

Aqua-Traxx PC is the industry's only pressure compensating drip tape. Aqua-Traxx PC increases profitability by saving water, energy and chemical costs and it allows for optimum results on land that was once considered marginal. The superior performance of Aqua-Traxx PC takes drip tape to the next level.

Applications

- Ideal to irrigate crops in difficult topographical conditions
- In areas of high wind where spray losses and poor uniformity would be unavoidable with sprinklers
- In areas with low or varying water pressure and in installations requiring long laterals



Aqua-Traxx[®] PC
Pressure Compensating Tape

Aqua-Traxx PC

Advantages

- Increased Emission Uniformity (EU).
- Saves water.
- Saves energy due to water savings and lower system pressures.
- Lower application rates nearly eliminate runoff problems.
- Saves fertilizer and other chemicals.
- Saves labor cost. Fertilizer and chemical applications are done through the system and there are no pipes to move.
- Easier access to the field for tractor operations.
- Avoids spray losses, evaporation and non-uniformity caused by windy conditions.
- Reduces diseases caused by high humidity, such as mildew.
- Systems are more economical due to smaller pipe size requirements, which are made possible by lower flow rates.
- Reduces herbicide and weeding labor.

Versatility

- Aqua-Traxx PC is available in spacing from 6" to 24".
- Wide pressure operating range: 4 – 25 psi.
- Significant elevation changes either down slopes or over undulating terrain.



Tube Features

- Seamless construction; no more splitting at the seam
- Blue stripes, signature of quality and a useful installation aid. Blue stripes “up” insures proper outlet placement
- Ultra-high strength and flexibility

Emitter Features

- Filter inlets - prevents debris from entering the flow path
- Turbulent flow path
- Pressure compensating
- Multiple laser slit outlets – Less susceptible to back siphoning and root intrusion
- Precise performance

PERFORMANCE CHARTS

Part Number **EAP5xx0867-xxx**
5/8" Diameter 0.67 gpm /100' @ 10 psi
0 % Slope
Inlet Pressure (psi)

EU%	10	12	14	16	18
94	350	375	375	375	375
92	425	450	450	475	500
90	475	500	500	525	525

Part Number **EAP5xx0850-xxx**
5/8" Diameter 0.50 gpm /100' @ 10 psi
0 % Slope
Inlet Pressure (psi)

EU%	10	12	14	16	18
94	425	450	450	475	475
92	525	550	550	575	575
90	575	600	625	650	650

3% Downslope
Inlet Pressure (psi)

EU%	10	12	14	16	18
94	475	500	500	525	525
92	575	600	600	600	625
90	625	650	675	675	675

3% Downslope
Inlet Pressure (psi)

EU%	10	12	14	16	18
94	525	575	600	600	625
92	675	725	725	750	750
90	775	800	825	825	850

6% Downslope
Inlet Pressure (psi)

EU%	10	12	14	16	18
94	75	100	100	125	500
92	475	550	600	625	650
90	625	650	675	700	725

6% Downslope
Inlet Pressure (psi)

EU%	10	12	14	16	18
94	75	75	100	125	125
92	150	175	500	700	750
90	700	775	800	825	850

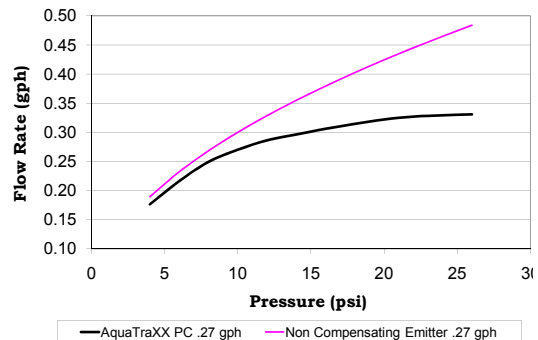
SPECIFICATIONS

Coefficient of Variation (CV)	All emitters	≤3%
Flow Exponent (x)	All emitters	0.3
Inside Diameter	5/8"	0.635
Inside Diameter	7/8"	0.875
Inside Diameter	1 3/8"	1.375
Operating pressure range	4-25 psi	see chart for different mill thicknesses
Hazen-Williams C factor	All tube sizes	140
Minimum filtration requirement	All emitters	200 mesh (74 micron)

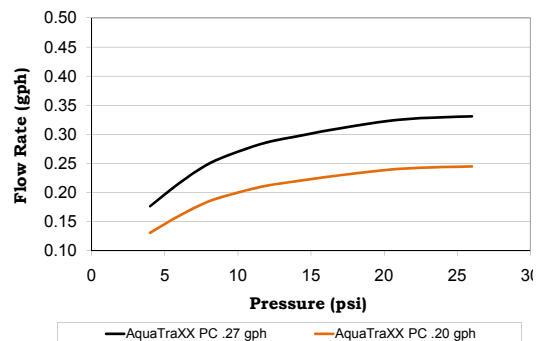
Note: To determine the Flow Coefficient (C), refer to the Emission Device Flow Formula on page 125, and solve for C using an operating pressure of 10 psi.

Kd = 0

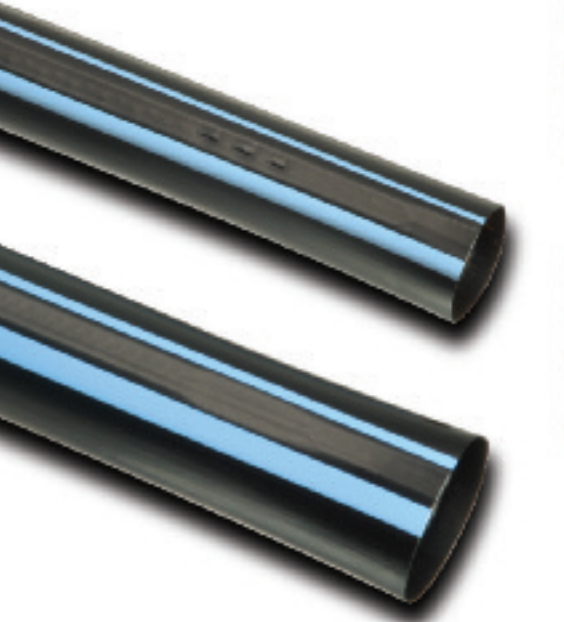
EMITTER FLOW VS PRESSURE



EMITTER FLOW VS PRESSURE OF AQUA-TRAXX PC



Aqua-Traxx PC Ordering Information



PRODUCT RANGE

Diameter	Wall Thickness	Pressure (psi)		Reel Length (ft.)	Reel Weight (lbs.)
		min	max		
5/8"	8 mil	4	16	7,500	63
	10 mil	4	20	6,000	60
	12 mil	4	22	5,100	58
	15 mil	4	25	4,000	61
7/8"	10 mil	4	18	4,400	65
	12 mil	4	20	4,000	61
	15 mil	4	22	3,000	62
1 1/8"	15 mil	4	18	2,700	87

FLOW RATE

Part Number	Individual Emitter Flow Rate (gph) @10 psi	spacing (in.)	Q-100 GPM per 100 ft. @10 psi
.20 gph @ 10 psi			
EAPXxx0667	0.20 gph	6"	0.67
EAPXxx0850	0.20 gph	8"	0.50
EAPXxx1234	0.20 gph	12"	0.34
EAPXxx1625	0.20 gph	16"	0.25
EAPXxx1822	0.20 gph	18"	0.22
EAPXxx2417	0.20 gph	24"	0.17
.27 gph @ 10 psi			
EAPXxx0690	0.27 gph	6"	0.90
EAPXxx0867	0.27 gph	8"	0.67
EAPXxx1245	0.27 gph	12"	0.45
EAPXxx1634	0.27 gph	16"	0.34
EAPXxx1830	0.27 gph	18"	0.30
EAPXxx2422	0.27 gph	24"	0.22

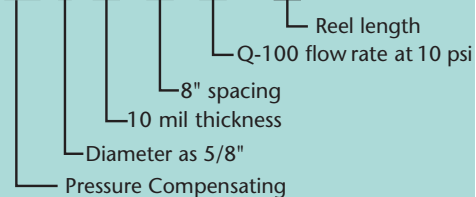
Understanding Aqua-Traxx Part Numbers

Aqua-Traxx PC

X - Denotes the diameter. 5 for 5/8", 7 for 7/8"

xx - Denotes mil thickness

Example: **EAP 5 10 08 50 - 600**



Note: Install with blues stripes up.

©2014 The Toro Company
 Micro-Irrigation Business
 1588 N. Marshall Avenue, El Cajon, CA 92020-1523, USA
 Tel: +1 (800) 333-8125 or +1 (619) 562-2950
 Fax: +1 (800) 892-1822 or +1 (619) 258-9973

toro.com

ALT089 09/14



Count on it.