

The Tale of the Tape



Install an ordinary drip tape and you'll be locked into ordinary results. That's because ordinary tapes can't affordably offer emitters spaced closer than 12 inches, *and* they may be more likely to plug.

But install premium drip tape — **Aqua-Traxx® with the PBX Advantage** — and you'll enjoy extraordinary results and durability. So, what's the PBX Advantage? Unmatched precision.

With options from 4 to 24 inches, you can select the emitter **spacing and flow**

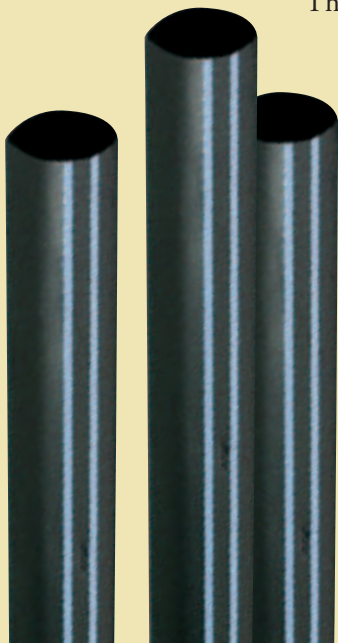
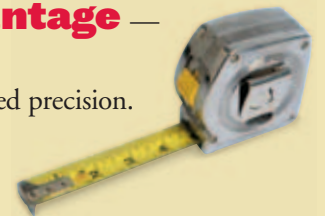
rates that work best for your soil type, crop and application needs.



Plus, the advanced flowpath design helps reduce clogging, so you'll worry less

about plants going thirsty. **Precise. Efficient. Practical.** That's the PBX Advantage.

That's the tape you want. *Ask us for more details or visit toro.com*



Aqua-Traxx®
with the **PBX Advantage**



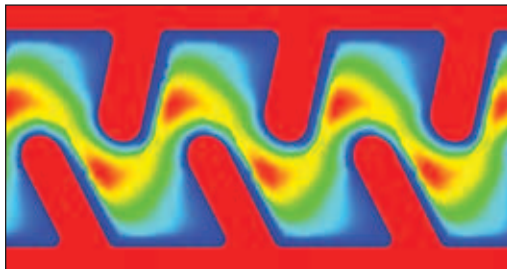
Count on it.

Flow Rates

Available in 4, 5, 6, 8, 10, 12 & 15 mil Tape

Part Number	Outlet Spacing		Emitter Flow Rate								Emitter Exponent	Filtration Requirement mesh (micron)
			gph		lph		gpm / 100 ft		lph / 1 meter			
	in	cm	@ 8 psi	@ 10 psi	@ 0.55 bar	@ 0.7 bar	@ 8 psi	@ 10 psi	@ 0.55 bar	@ 0.7 bar		
0.07 gph emitter												
EAXxx0817	8	20	0.07	0.08	0.26	0.30	0.17	0.20	1.30	1.47	0.55	200 (74)
EAXxx1609	16	40	0.07	0.08	0.26	0.30	0.09	0.10	0.65	0.74		
0.09 gph emitter												
EAXxx0822	8	20	0.09	0.10	0.34	0.38	0.22	0.25	1.66	1.88	0.55	200 (74)
EAXxx1611	16	40	0.09	0.10	0.34	0.38	0.11	0.13	0.83	0.94		
0.10 gph emitter												
EAXxx0825	8	20	0.10	0.11	0.38	0.43	0.25	0.28	1.86	2.11	0.55	200 (74)
EAXxx1613	16	40	0.10	0.11	0.38	0.43	0.13	0.14	0.93	1.05		
0.13 gph emitter												
EAXxx0467	4	10	0.13	0.15	0.51	0.57	0.67	0.75	4.99	5.58	0.50	140 (105)
EAXxx0644	6	15	0.13	0.15	0.51	0.57	0.44	0.50	3.33	3.72		
EAXxx0834	8	20	0.13	0.15	0.51	0.57	0.34	0.37	2.50	2.79		
EAXxx1222	12	30	0.13	0.15	0.51	0.57	0.22	0.25	1.66	1.86		
EAXxx1617	16	40	0.13	0.15	0.51	0.57	0.17	0.19	1.25	1.40		
EAXxx1814	18	45	0.13	0.15	0.51	0.57	0.14	0.17	1.11	1.24		
EAXxx2411	24	60	0.13	0.15	0.51	0.57	0.11	0.12	0.83	0.93		
0.15 gph emitter												
EAXxx0650	6	15	0.15	0.17	0.57	0.63	0.50	0.56	3.73	4.17	0.50	140 (105)
EAXxx1225	12	30	0.15	0.17	0.57	0.63	0.25	0.28	1.86	2.08		
EAXxx1817	18	45	0.15	0.17	0.57	0.63	0.17	0.19	1.24	1.39		
0.20 gph emitter												
EAXxx04100	4	10	0.20	0.22	0.76	0.85	1.00	1.12	7.47	8.36	0.50	140 (105)
EAXxx0667	6	15	0.20	0.22	0.76	0.85	0.67	0.75	4.99	5.58		
EAXxx0850	8	20	0.20	0.22	0.76	0.85	0.50	0.56	3.74	4.18		
EAXxx1234	12	30	0.20	0.22	0.76	0.85	0.34	0.37	2.50	2.79		
EAXxx1625	16	40	0.20	0.22	0.76	0.85	0.25	0.28	1.87	2.09		
EAXxx1822	18	45	0.20	0.22	0.76	0.85	0.22	0.25	1.67	1.86		
EAXxx2417	24	60	0.20	0.22	0.76	0.85	0.17	0.19	1.25	1.40		
0.27 gph emitter												
EAXxx04134	4	10	0.27	0.30	1.01	1.13	1.34	1.50	9.99	11.16	0.50	140 (105)
EAXxx0690	6	15	0.27	0.30	1.01	1.13	0.90	1.00	6.66	7.44		
EAXxx0867	8	20	0.27	0.30	1.01	1.13	0.67	0.75	4.99	5.58		
EAXxx1245	12	30	0.27	0.30	1.01	1.13	0.45	0.50	3.33	3.72		
EAXxx1634	16	40	0.27	0.30	1.01	1.13	0.34	0.37	2.50	2.79		
EAXxx1830	18	45	0.27	0.30	1.01	1.13	0.30	0.33	2.22	2.48		
EAXxx2422	24	60	0.27	0.30	1.01	1.13	0.22	0.25	1.67	1.86		
0.34 gph emitter												
EAXxx04168	4	10	0.34	0.37	1.27	1.42	1.68	1.87	12.48	13.95	0.50	140 (105)
EAXxx06112	6	15	0.34	0.37	1.27	1.42	1.12	1.25	8.33	9.31		
EAXxx0884	8	20	0.34	0.37	1.27	1.42	0.84	0.94	6.24	6.98		
EAXxx1256	12	30	0.34	0.37	1.27	1.42	0.56	0.62	4.16	4.65		
EAXxx1642	16	40	0.34	0.37	1.27	1.42	0.42	0.47	3.12	3.49		
EAXxx1838	18	45	0.34	0.37	1.27	1.42	0.38	0.42	2.78	3.10		
EAXxx2428	24	60	0.34	0.37	1.27	1.42	0.28	0.31	2.08	2.33		
0.53 gph emitter												
EAXxx04265	4	10	0.53	0.59	2.01	2.24	2.65	2.96	19.75	22.08	0.50	140 (105)
EAXxx08133	8	20	0.53	0.59	2.01	2.24	1.33	1.48	9.87	11.04		
EAXxx1288	12	30	0.53	0.59	2.01	2.24	0.88	0.99	6.58	7.36		
EAXxx1666	16	40	0.53	0.59	2.01	2.24	0.66	0.74	4.94	5.52		
EAXxx2444	24	60	0.53	0.59	2.01	2.24	0.44	0.49	3.29	3.68		
EAXxx3629	36	90	0.53	0.59	2.01	2.24	0.29	0.33	2.19	2.45		

* X denotes the diameter. 5 for 5/8", 7 for 7/8", 8 for 1" and 11 for 1-3/8"
 ** xx denotes mil thickness.
 *** 1" only available in 13 mil.
 Metric outlet spacing expressed as nominal length.



The Proportionally Balanced Cross-Section (PBX) design optimizes flowpath turbulence to effectively manage water flow, deliver uniform distribution and reduce clogging.

Specifications

Diameter	Wall Thickness	Operating Pressure				Reel Length		Reel Weight	
		psi		bar		ft	meters	lbs	Kg
		min	max	min	max				
5/8" (16mm)	4 mil	4	8	0.3	0.55	15,000	4,572	66	30
	5 mil	4	10	0.3	0.7	13,000	3,962	72	33
	6 mil	4	12	0.3	0.8	10,000	3,048	64	29
	8 mil	4	15	0.3	1.0	7,500	2,286	66	30
	10 mil	4	15	0.3	1.0	6,000	1,829	63	29
	12 mil	4	15	0.3	1.0	5,100	1,554	63	29
5/8" (16mm) Short Reels	15 mil	4	15	0.3	1.0	4,000	1,219	63	29
	6 mil	4	12	0.3	1.0	2,500	762	17	8
	8 mil	4	15	0.3	1.0	2,000	610	17	8
	10 mil	4	15	0.3	1.0	1,500	457	16	7
	12 mil	4	15	0.3	1.0	1,100	335	16	7
	15 mil	4	15	0.3	1.0	1,000	305	16	7
7/8" (22mm)	6 mil	4	10	0.3	0.7	7,380	2,250	68	31
	8 mil	4	15	0.3	1.0	6,000	1,829	72	33
	10 mil	4	15	0.3	1.0	4,400	1,341	71	32
	12 mil	4	15	0.3	1.0	4,000	1,219	72	33
1" (25mm)	15 mil	4	15	0.3	1.0	3,000	914	66	30
	13 mil	4	15	0.3	1.0	3,000	914	66	30
1 3/8" (35mm)	15 mil	4	15	0.3	1.0	2,700	823	87	39

Aqua-Traxx®

with the **PBX Advantage**

Premium Drip Tape with Unmatched Precision

Precision

- Emitter spacing options from 4 to 24 inches
- Flow rates that match your soil type
- Accurately delivers water, fertilizer and chemicals

Uniformity

- Advanced flowpath design ensures accurate delivery of water from every emitter
- Best-in-class coefficients of variation (Cv's) — below 3 percent

Durability

- Seamless construction provides maximum strength
- Premium materials provide ultra-high strength and flexibility

Plugging Resistance

- Extra-large cross-sectional area helps prevent clogging
- PBX flowpath requires only 140-mesh filtration for most flow rates

©2012 The Toro Company
 Micro-Irrigation Business
 1588 N. Marshall Avenue, El Cajon, CA 92020-1523, USA
 Tel: +1 (800) 333-8125 or +1 (619) 562-2950
 Fax: +1 (800) 892-1822 or +1 (619) 258-9973

toro.com

ALT046-1 06/12

