



Count on it.

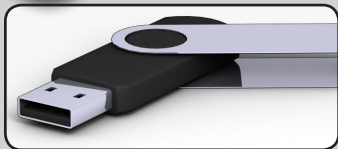
EVOLUTION® Firmware Update Installation Guide

The EVOLUTION controller can be updated by downloading the latest controller firmware from Toro's website, loading the firmware onto a USB drive, and inserting it into the controller's USB port. There are two different methods to load the firmware depending on the version currently running on your EVOLUTION controller. Page 2 details 2.0 and earlier. Page 3 is for 2.13 and later. To find your current version, at the controller navigate to and select FIRMWARE in the ADVANCED menu.



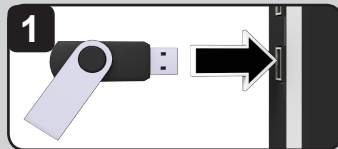
At the Computer

A Prepare the USB drive

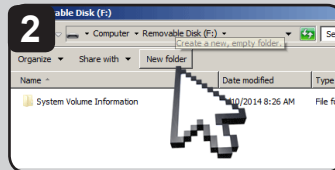


Recommended:

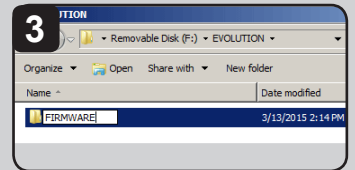
- formatted FAT32
- 1-8 GB
- USB 2.0 compliant
- no other files



1 Insert USB drive into computer USB slot.

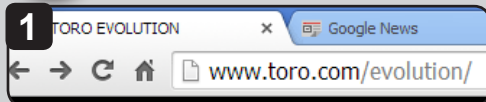


2 In the USB drive root folder, create new folder called EVOLUTION.

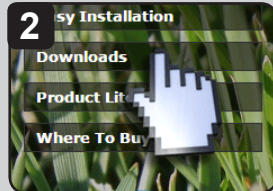


3 Within that folder, create new folder called FIRMWARE.

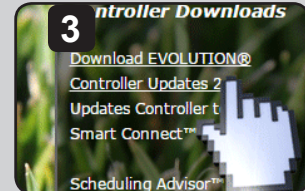
B Download the firmware files



1 Browse to Toro's EVOLUTION page:
USA and Canada: www.toro.com/evolution
Int'l: www.toroevolution.com

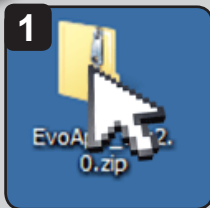


2 Click on the Downloads link.

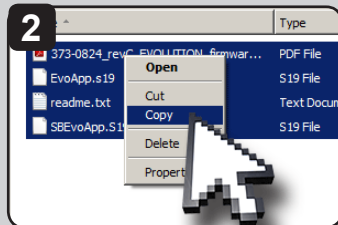


3 Click the "Download EVOLUTION Controller Updates 2.13" link.
Download the file to your computer's desktop.

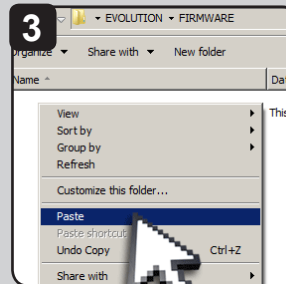
C Extract and copy the files to the USB drive



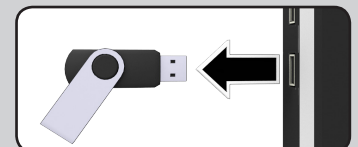
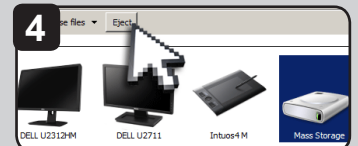
1 On the desktop, double-click the ZIP file.



2 You will see four files. Sweep and COPY those files.



3 Navigate to the FIRMWARE folder on the USB drive. PASTE the files into that folder.



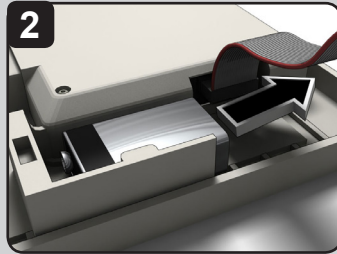
4 EJECT and remove the USB thumb drive.



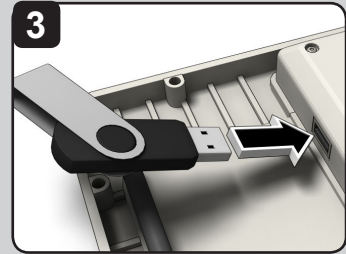
Upgrade from Version 2.0 and Earlier:



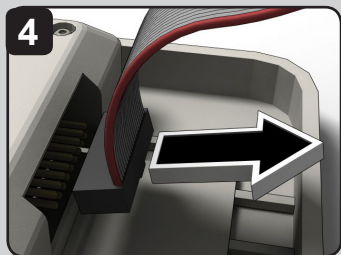
1 Open the EVOLUTION controller.



2 If backup battery is present, remove it.



3 Insert USB drive into controller USB slot.



4 Remove power from the controller.

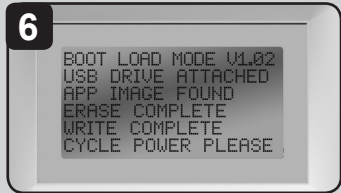
- Unplug AC (preferred) OR
- Remove ribbon cable

5 **At the same time:**

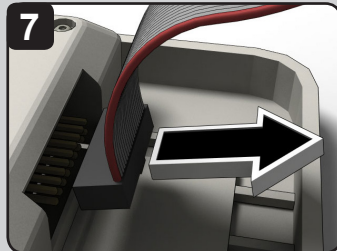
Hold finger on DOWN button AND...

...return power to the controller.

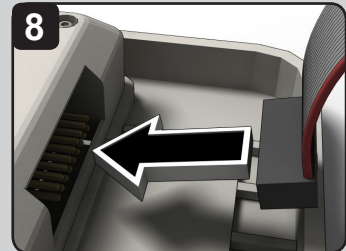
- Plug AC power back in OR
- Reattach ribbon cable



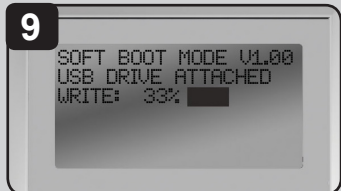
6 Controller will automatically recognize USB drive and upgrade the controller. Cycle power when prompted.



7 Remove power from the controller.



8 ...return power to the controller.



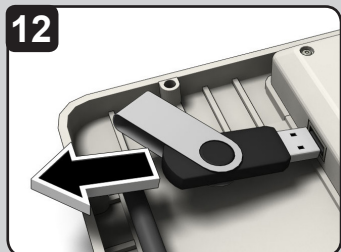
9 Firmware file is updated. A status bar will indicate progress.



10 Controller resets and is updated!



11 Go to ADVANCED-->FIRMWARE-->VERSION and confirm firmware update to 2.13.



12 Remove USB drive if desired.

Congratulations!

Your EVOLUTION controller is now ready to work with Smart Connect.



A video demonstrating the firmware upgrade procedure is available at:

www.toro.com/evolution

(US & Canada)

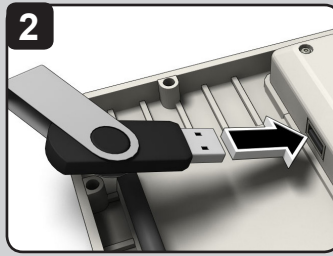
www.toro-evolution.com (int'l).



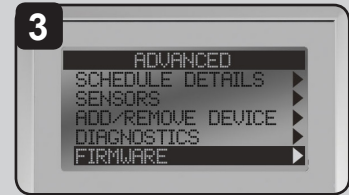
Upgrade to Version 2.13 and Later:



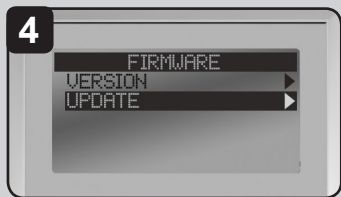
1 Open the EVOLUTION controller.



2 Confirm USB drive is in the controller USB slot.



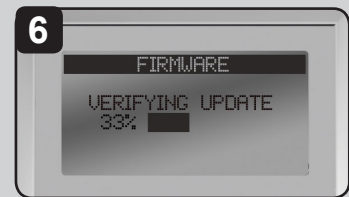
3 Enter the ADVANCED menu.
Navigate to FIRMWARE.
Press SELECT.



4 Navigate to UPDATE.
Press SELECT.



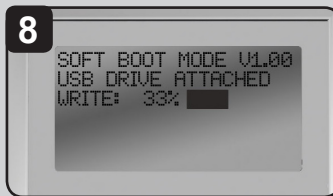
5 Navigate to UPDATE.
Press SELECT.



6 Controller verifies the file on the USB drive is valid.



7 Controller displays the firmware version in the controller (*current*) and the version on the USB drive (*update*).
If the update version is more up-to-date than the current version, press SELECT on YES.



8 Firmware file is updated.
A status bar will indicate progress.



9 Controller does a soft reboot and is updated!



10 Go to
ADVANCED-->FIRMWARE-->VERSION
and confirm firmware update to 2.13.



Remove USB drive if desired.

Congratulations!

Your EVOLUTION controller is now ready to work with Smart Connect.



A video demonstrating the firmware upgrade procedure is available at:
www.toro.com/evolution
(US & Canada)
www.toroevolution.com (int'l).

Technical Support:

1-877-345-8676
(USA & Canada)

evolution@toro.com
(international)